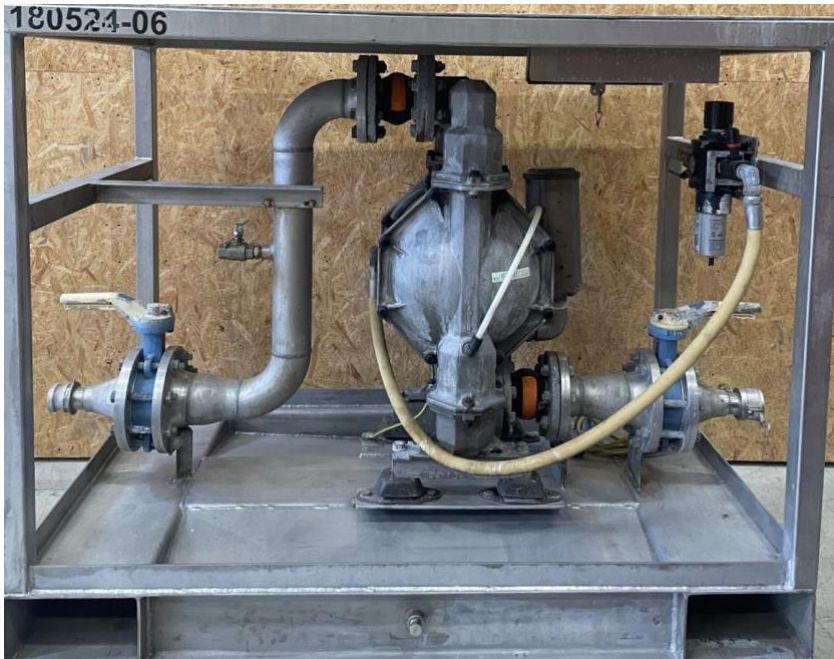


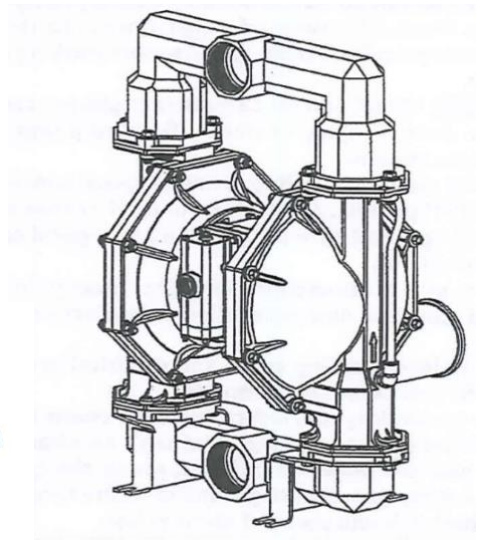
3" DIAPHRAGM PUMP

2:1 Ratio



1.1 Pump data

Pump type: Metallic air operated double diaphragm
Weight: 121,60 kg
Max air inlet pressure: 100psi, 6,9bar
Max material inlet pressure: 250psi, 17.2bar
Max outlet pressure: 200 psi, 13,8bar
Max flow rate: 150 psi, 567,8 l.p.m
Max particle size: 3/8" dia (9,5mm)



The high-pressure pump was developed for applications requiring fluid pressures in excess of the 100 psi developed by traditional pumps. Compared to a standard diaphragm pump, the 2:1 ratio high-pressure pump can produce up to 200 psi, at about half the flow rate.

The 2:1 ratio is accomplished by using the effective surface area of both diaphragms to double the output pressure.

Maximum allowable work pressure (MAWP) 250 Psi

The Envitec Single Skid Diaphragm Pump Skid is the best solution for applications that require more fluid transfer. Including liquids containing solids, viscous or sticky media will all be handled without problems. The diaphragm pump offers high volume delivery even at low air pressure and a broad range of material compatibility options are available.

Technical Information

Height: 1200mm

Width: 900mm

Length: 1500mm

Weight: 350kg

Pump Rate - Up to:

600L/min

36 m3/hour

Air Consumption:

100M3/Hour



ATEX-Certified